



Port Credit West Village

Parks & Open Spaces Design Brief

March 1st, 2018

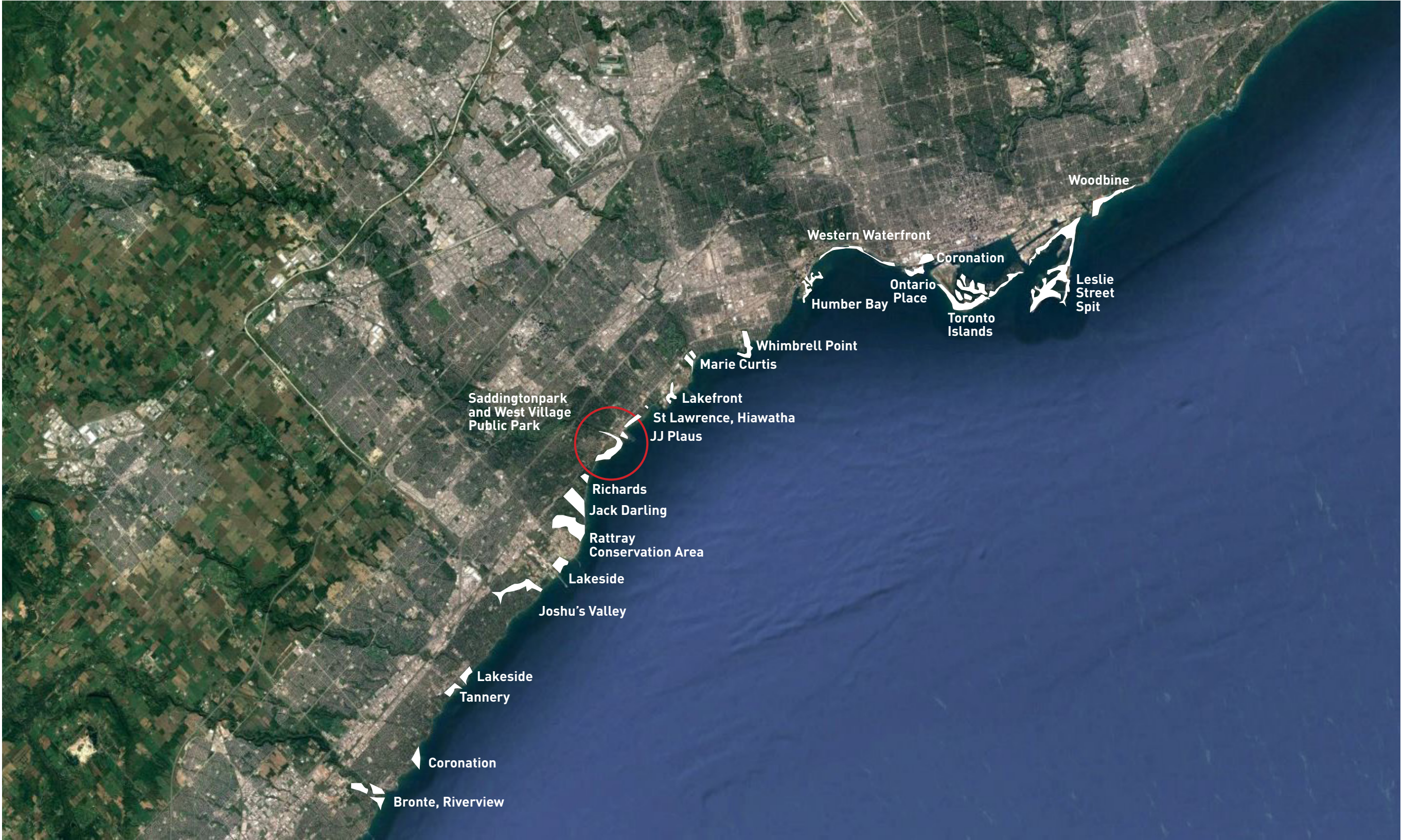


Open Spaces & Connections

The Master Plan proposes a variety of destination and local open spaces, providing diverse and connected landscapes and experiences. A total of ± 12.4 acres of park land, plus 4.9 acres of publically accessible private open spaces are allocated within the current plan. Further, the waterfront crown lands located south of the site (which are not part of the application), is expected to be incorporated into the design of the new Public Park. These lands will further contribute to the expansion of park land in the area.



Context: Waterfront Park System



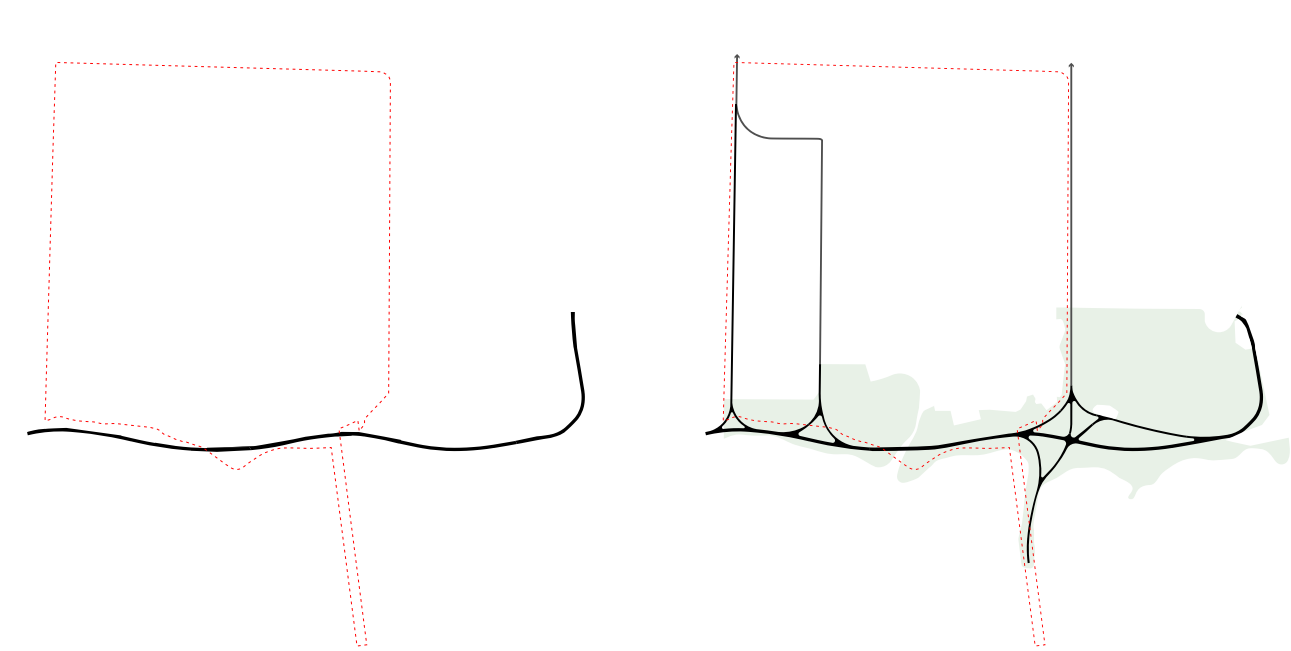
Public Realm Composition

The Master Plan extends the Park System and the Waterfront Trail along Lake Ontario and Port Credit River, connecting to J.C. Saddington Park to the east, and Ben Machree Park to the west.



Creating Connections to the Waterfront Trail

The current Waterfront Trail connects from Mississauga Road to Maple Avenue South. The new park and trail system will increase the connection to the Waterfront Trail and enhance access to the Waterfront. Proposed water features and swales will bring water through the public realm, amplifying the Waterfront identity of West Village.

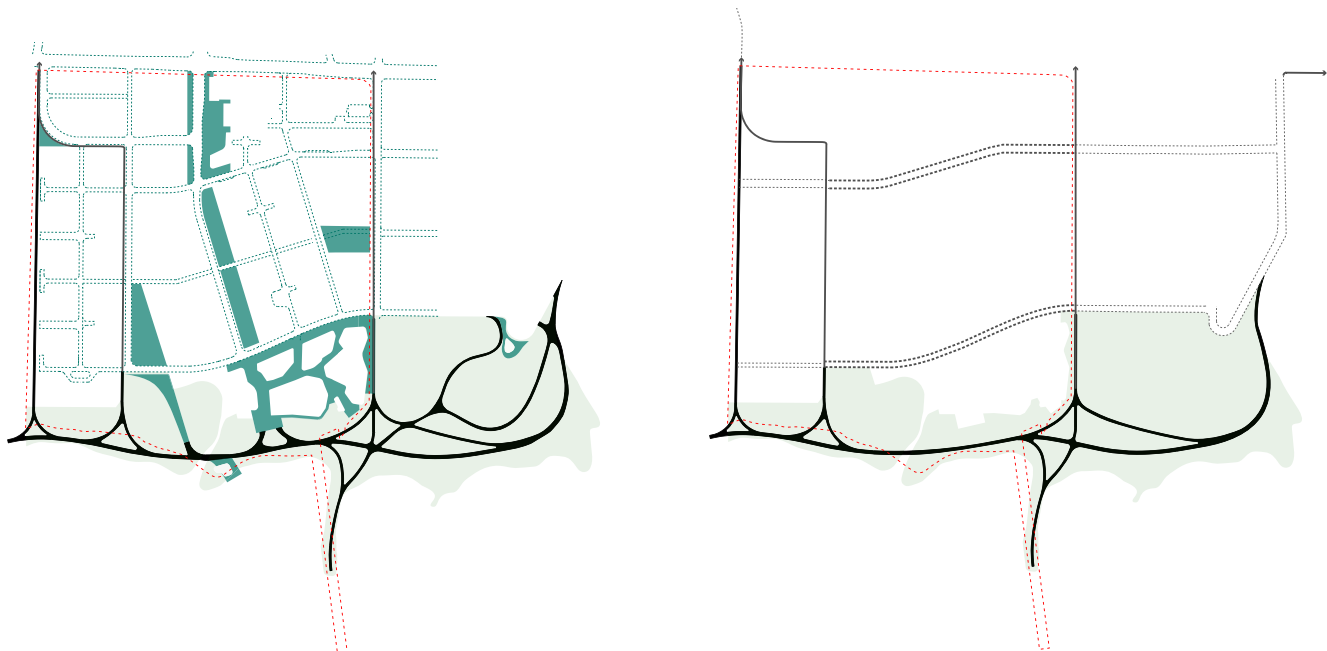


Existing Waterfront Trail

Proposed Waterfront Trail Connections

Movement Through the Site

Pedestrian and cyclist movement is prioritized on the site with more of the right-of-way area dedicated to active transportation than private automobiles, and increased connectivity to the surrounding neighborhoods.



Pedestrian Circulation

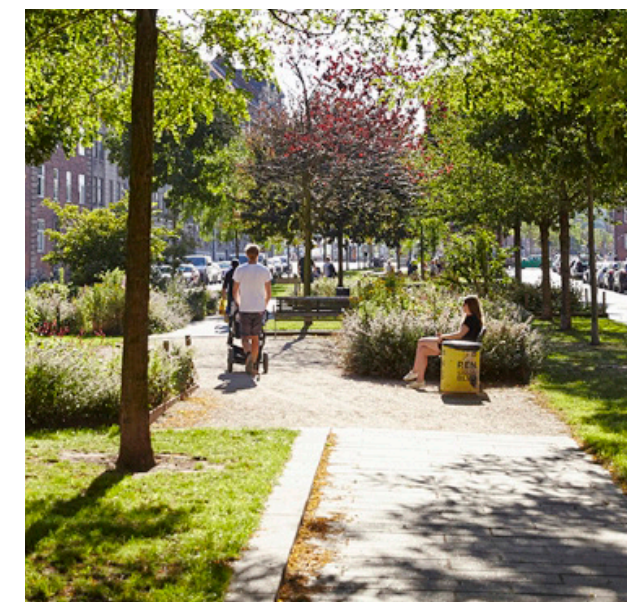
Circulation - Multi-Use Trails and Cycling



Central Promenade and Linear Park

Designed as the West Village's vibrant central spine, a promenade composed of a series of squares and linear parks will draw the mainstreet buzz of Lakeshore Road West down into the heart of the neighbourhood, connecting to the Lakeside Campus and the waterfront.

The Central Green Promenade is the urban spine of the west village, connecting from Lakeshore down to the waterfront of Lake Ontario. It is curated in three distinct and connected parts, each scaled to suit the community uses that will front it. Meeting Lakeshore, the surrounding built form will create a comfortably-scaled vibrant pedestrian plaza, the West Village Square. From Port Street to Lake Street, where blocks are fronted by primarily residential uses, the tree-lined corridor will include a 25m linear public park for active and passive program park uses, and activities including gathering, play and multi-sports. Finally, the southeast block provides access to the Campus, a year round destination that will interface with the public park along the shoreline, a short walk from a proposed beach.



Street B - Promenade



Figure 1 is conceptual only. Final design details to be confirmed through discussions with staff



All renderings are artistic concepts. They do not reflect final proposed architecture or landscape design.





New Public Park System

A new public park system forms the backbone of the plan, providing neighbourhood amenities that can cater to all ages and demographics, with a texture and sensibility to reinforce the identity of the West Village at the mouth of the Credit River.

This unique Site provides an opportunity to diversify Port Credit's park program experience and connect extensive new open space amenities deeper into the urban fabric of the Port Credit community. The goal of the park system is to provide diversity within a complete and comprehensive system; leveraging streets, mews and Privately-Owned Publicly Accessible Spaces to provide connectivity through the site, to the waterfront, and between neighbouring communities. The park system will deliver a variety of scales and activities, formal and informal program, and a variety of textures of landscape.





All renderings are artistic concepts. They do not reflect final proposed architecture or landscape design.



Destination Public Park

A new public park continues of the east-west green park system already established in Port Credit East Village, and creates a large destination waterfront park experience by integrating seamlessly with a potentially revitalized J.C. Saddington Park.

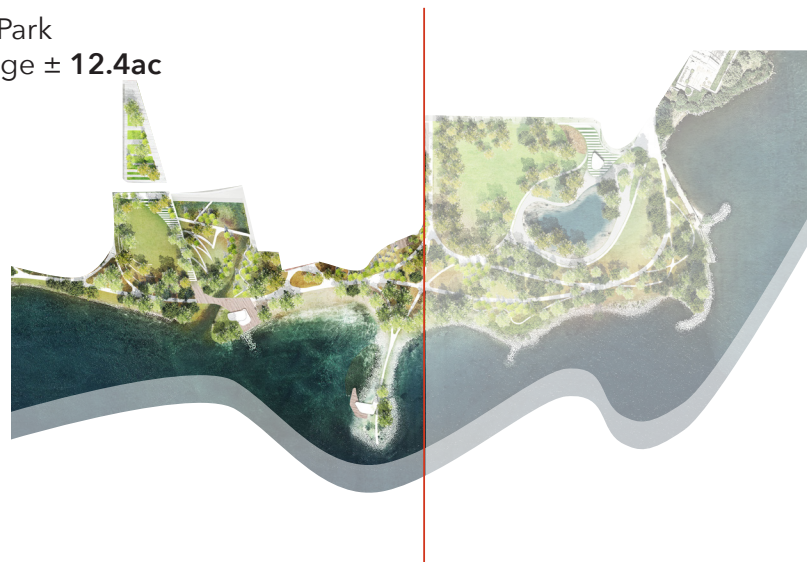
The new public park will complete a fully connected system of waterfront parks through Port Credit, connecting to J.C. Saddington Park and Ben Machree Park.

The proposed waterfront open space system takes its cue from the fluid, textured edges of Credit River and Lake Ontario, and includes picnic terraces, sculpted landforms, a Destination Public Park, and a public beach. Additionally, Ecological Gardens will be established, fed by natural rain water overflow through the park topography, adding habitat to the park program and recalling the historic mouth of the credit shoreline of multiple smaller tributaries.

This new public park will serve as a central landscape feature for the development, creating new residential addresses and attracting visitors from surrounding neighbourhoods to province wide.



New Public Park
at West Village ± **12.4ac**

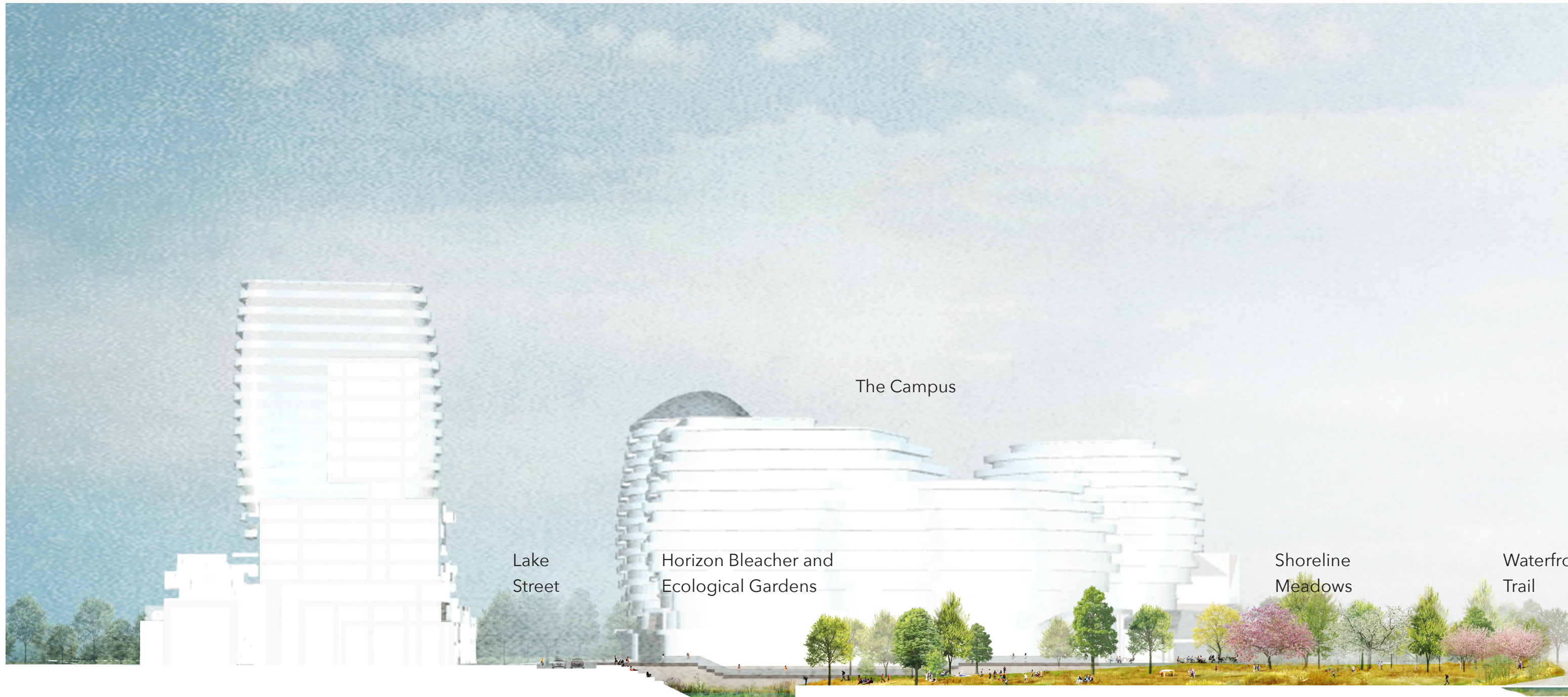


J.C. Saddington
± **15.7 ac** (including 1.7ac
of parking potentially
transformed to parkland)





All renderings are artistic concepts. They do not reflect final proposed architecture or landscape design.



Destination Park Conceptual Section View

All renderings are artistic concepts. They do not reflect final proposed architecture or landscape design.



ont

Park Pavilion,
Terrace and
Footbridge

The Beach

The Point



Ben Machree Trail

The westernmost green corridor is characterized by its soft edges, creating a naturalized buffer between the Site and the adjacent neighbourhood. It will accommodate an active transportation route that connects Lakeshore Road West to the Waterfront Trail System.

The existing corridor of mature trees at the western edge of the Site acts as a natural buffer to the new development and will be enhanced and re-imagined as a new community connection that links Lakeshore Road West with the water's edge. As far as possible existing trees will be kept, with a new serpentine path and planting to create a recreational pathway with an opportunity for an ecological interpretive experience. Except for privacy fence, planting will be deep and lush to ensure privacy for existing rear facing homes along the western edge. The new development will 'front' the trail for many eyes on the space, making it safe and vibrant for all users regardless of age and gender. There will be a number of midblock east/west paths that connect to the new neighbourhood, with lighting to further create a safe and welcoming condition during evening times.

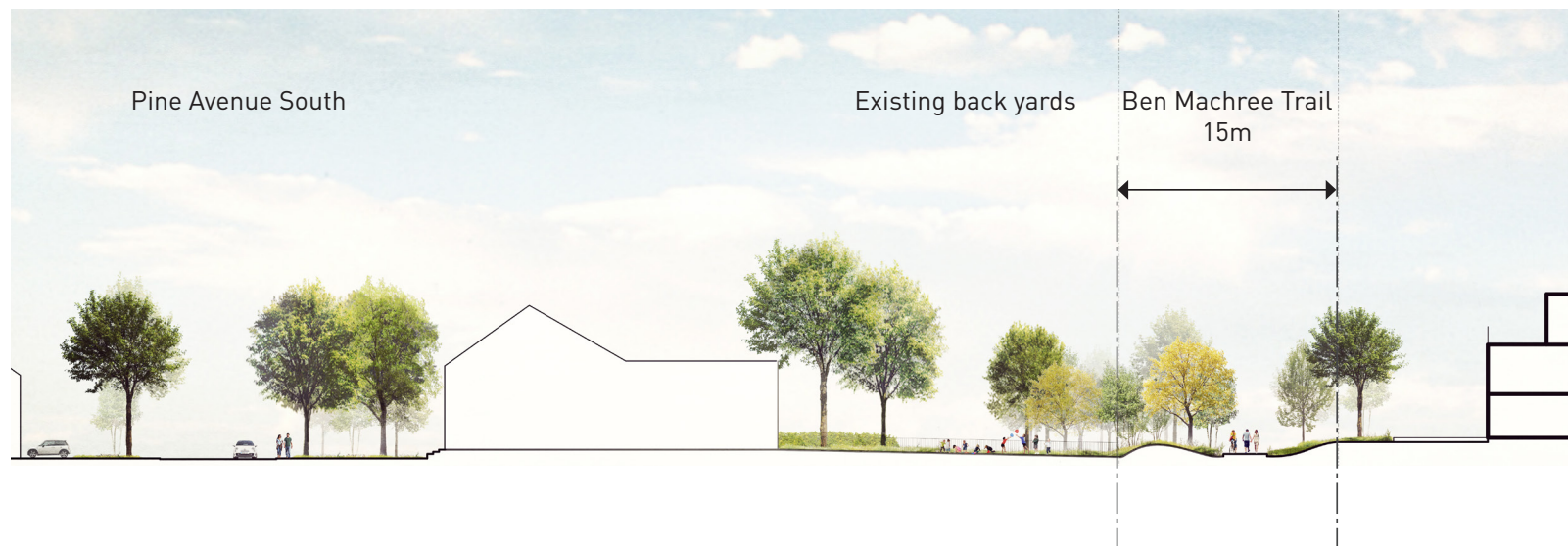


Figure 1 is conceptual only. Final design details to be confirmed through discussions with staff





Port Credit Ben Machree Trail Conceptual View

All renderings are artistic concepts. They do not reflect final proposed architecture or landscape design.



Local Parks and Mews

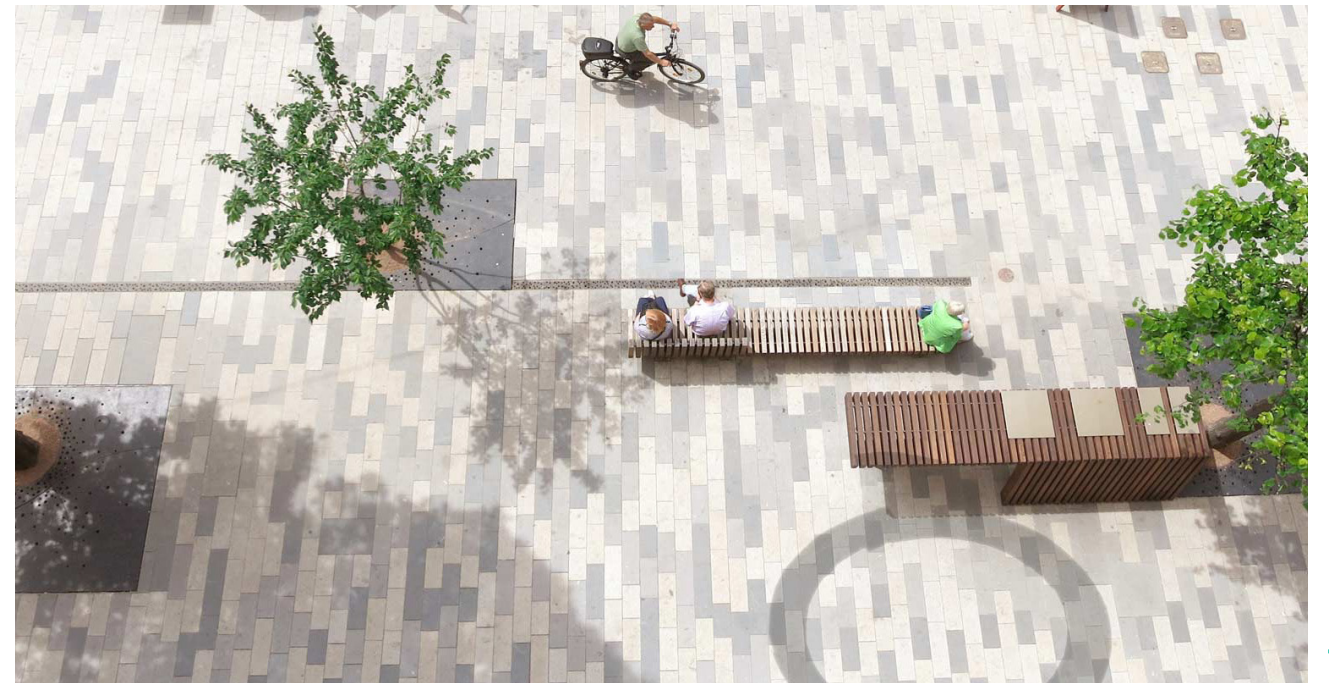
At the local neighbourhood scale, community parks and pedestrian mews will bring multifunctional community gathering spaces and connections into the heart of the West Village Community.

The southwest community park connects Bay Street mews and the waterfront public park. With its triangular shape, it provides an expanding view corridor towards the lake. Lawns and furniture in this park are relatively formally arranged, as a strong comparison to the waterfront, also the similar pattern transitions into the public park to represent a strong visual connectivity. The trees however, are freely positioned to form a unity with the public park - it also creates a feeling that the nature comes into it.

The northeast community park is the terminus of the Bay Street mews, and a playground is placed to serve the community as a play and gathering space. The two community parks then are connected by the mews.



Aside from connecting the community parks, the Bay Street mews also is a Privately-Owned Publicly Accessible Space. It creates intimate scale and is pedestrian and children friendly. The mews also is, to some extent, an expansion of the promenade, which connects the public spaces in the subject site and creates a public accessible network. The mews also creates local business opportunities, and the mews itself provides a gathering space for the neighbourhood. When the trees along the mews become mature, they should provide good shade to the mews. Appropriate lighting will provide warm and friendly atmosphere to the mews as well.



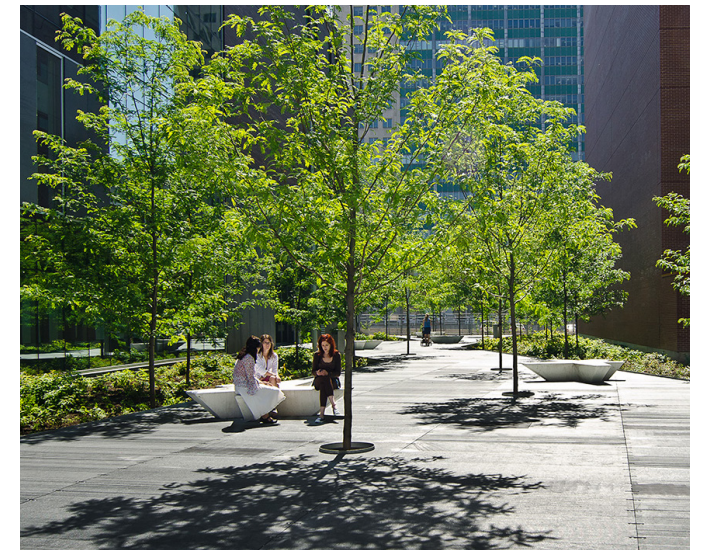
All renderings are artistic concepts. They do not reflect final proposed architecture or landscape design.



Campus

The Campus Open Space

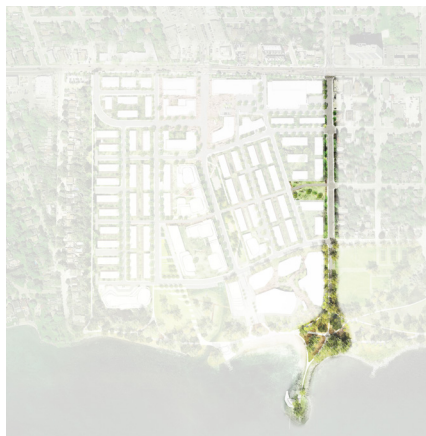
At the terminus of the Central Promenade, the campus serves as an interface and aperture between the West Village and the shoreline experience. A curated sequence of buildings and intimate open spaces, this year round destination is intended as a catalyst to activate and support the shoreline park system. Porous and fine grained in nature, it serves as a complimentary counterpoint to the broad axial views of the park and street systems, with its organic built form sensibility resulting in a diverse and eclectic spatial frame. The campus open space draws its inspiration from the historic naturalized shoreline, bringing a wild and textured landscape into the courtyards and pedestrian connections. A flexible and programmable deck surface is suspended over this landscape, with apertures cut through that allow the shoreline landscape to burst through, resulting in the visitor experiencing a surprising vantage point of this pioneer vegetation. The human scale of the campus gives it particular opportunities for unique program and experiences that play a symbiotic role to fuel the broader waterfront park system.





Campus Court View

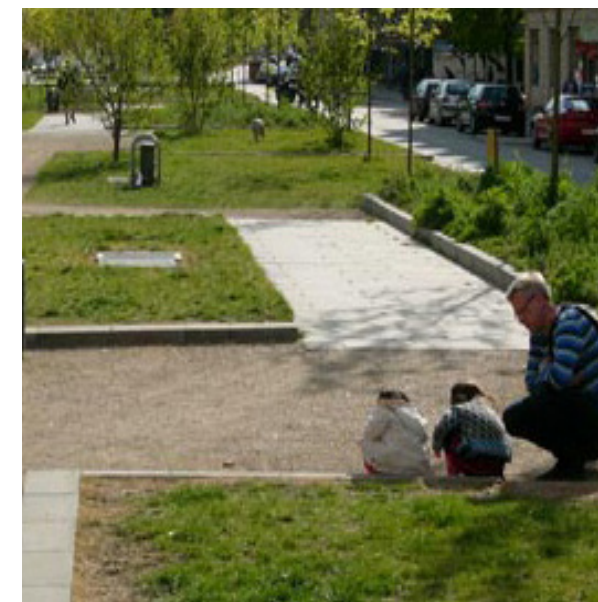
All renderings are artistic concepts. They do not reflect final proposed architecture or landscape design.



Mississauga Road Green Ribbon

The Mississauga Road Green Ribbon buffers the Site from the Old Port Credit Village Heritage Conservation District to its east. It is characterized by its generous sidewalk widths, tree canopy, and transit-supportive right-of-way.

Mississauga Road South will continue to serve the existing communities to the east as a main access street. It will be scaled with room for sidewalks, a multi-use trail and generous tree planting on the west side to match the mature trees of the gardens within the historic town blocks to the east. Mississauga Road north of lakeshore boasts a diversity of trees and link to the cultural and natural heritage. This major north-south spine will form a key connection north from the Credit Valley, through Lakeshore Road West, and south to the Public Park and pedestrian pier. At its southern extent, visitors will be able to access the new YMCA and/or other innovative partners, travel through the Campus, and then loop around to return to Lakeshore via the central street and squares along the promenade.



Mississauga Road



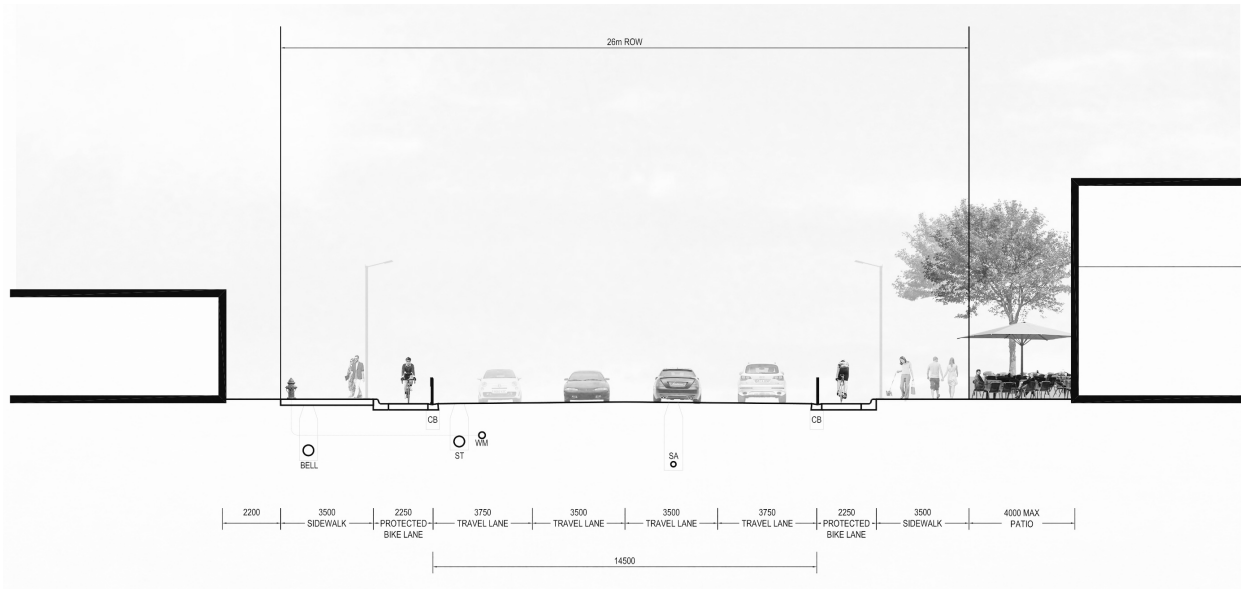
Mississauga Road Typical Street View

All renderings are artistic concepts. They do not reflect final proposed architecture or landscape design.

Typical Proposed Street Sections

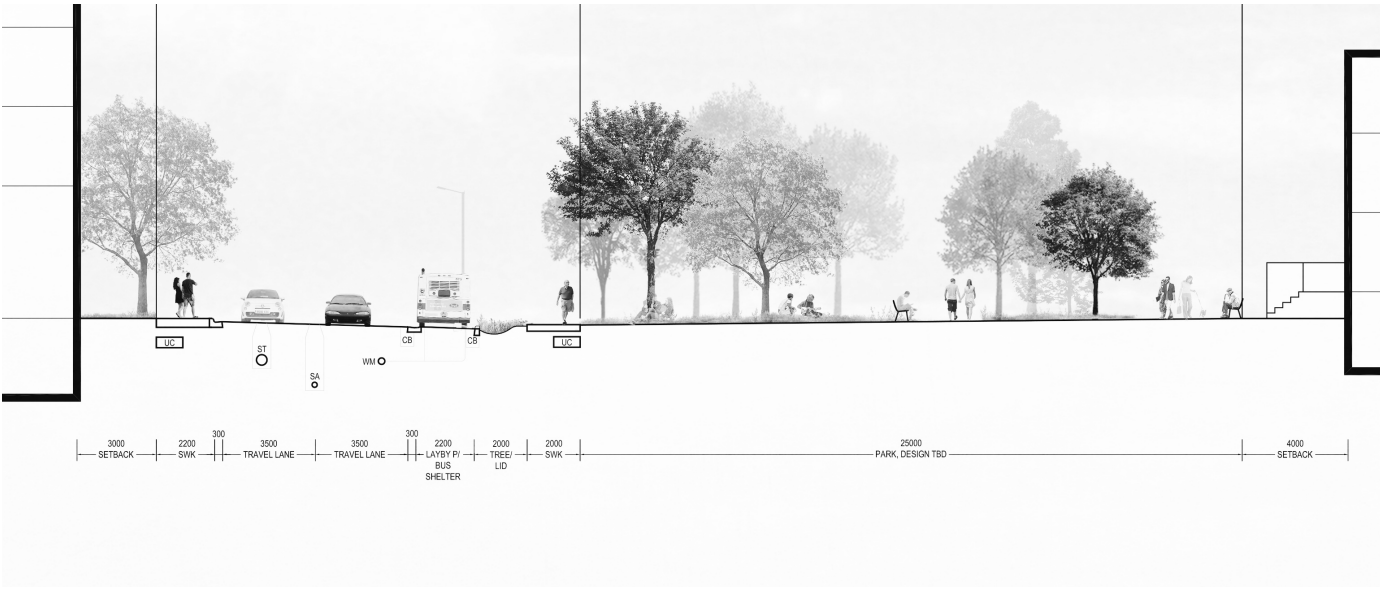
Arterial: Lakeshore Rd. West

Section A



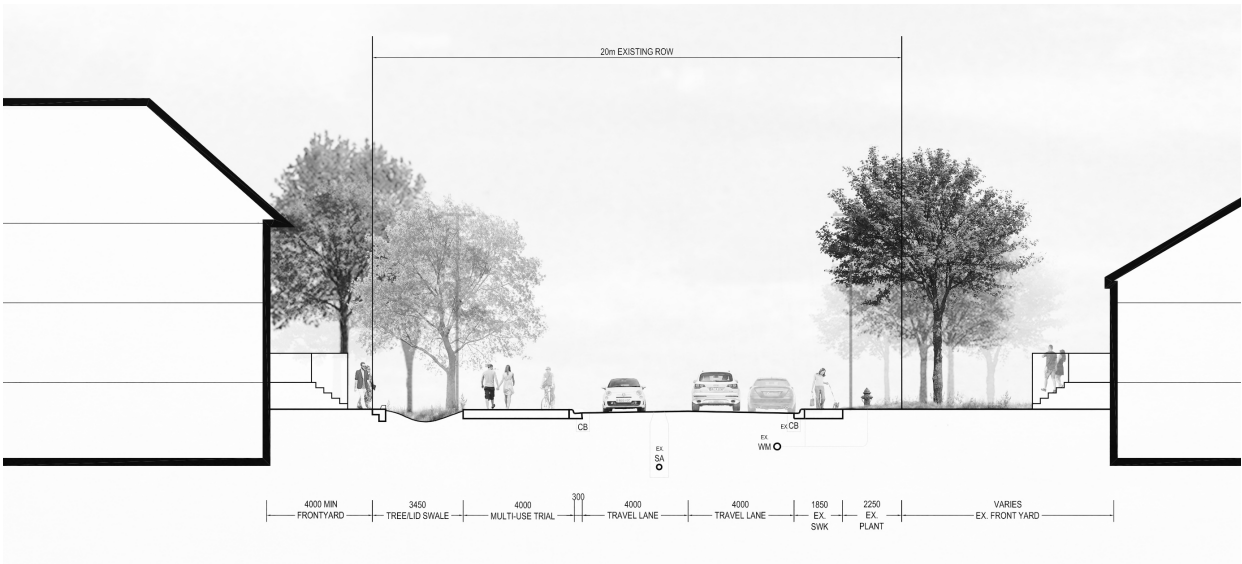
Street B: Promenade

Section B



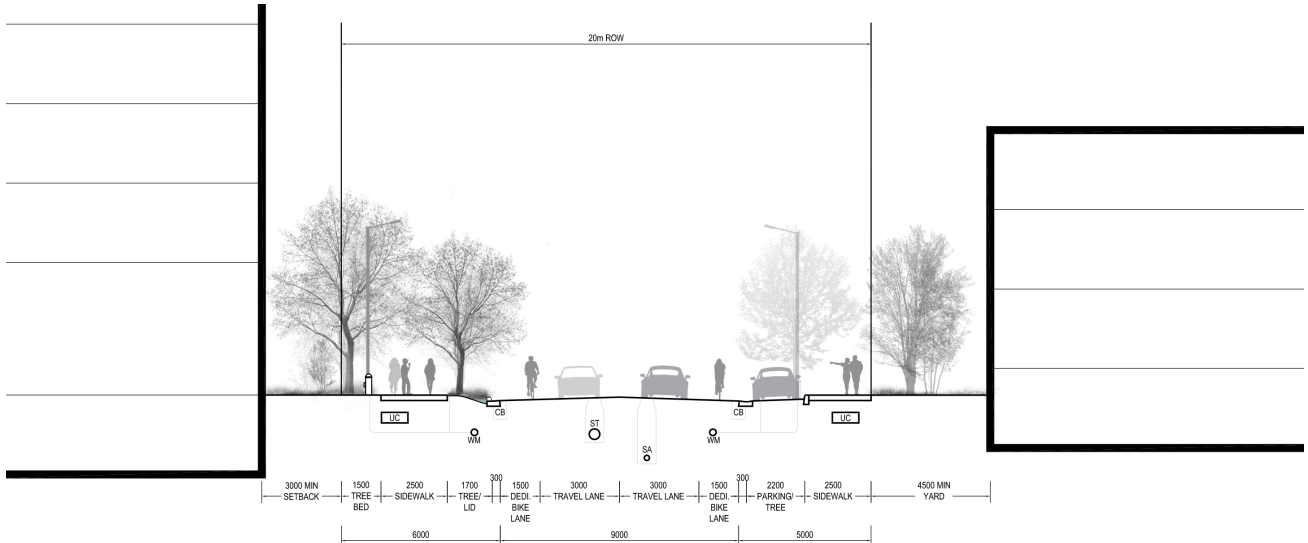
Minor Collector: Mississauga Rd. S

Section D



Local Street C: Port Street

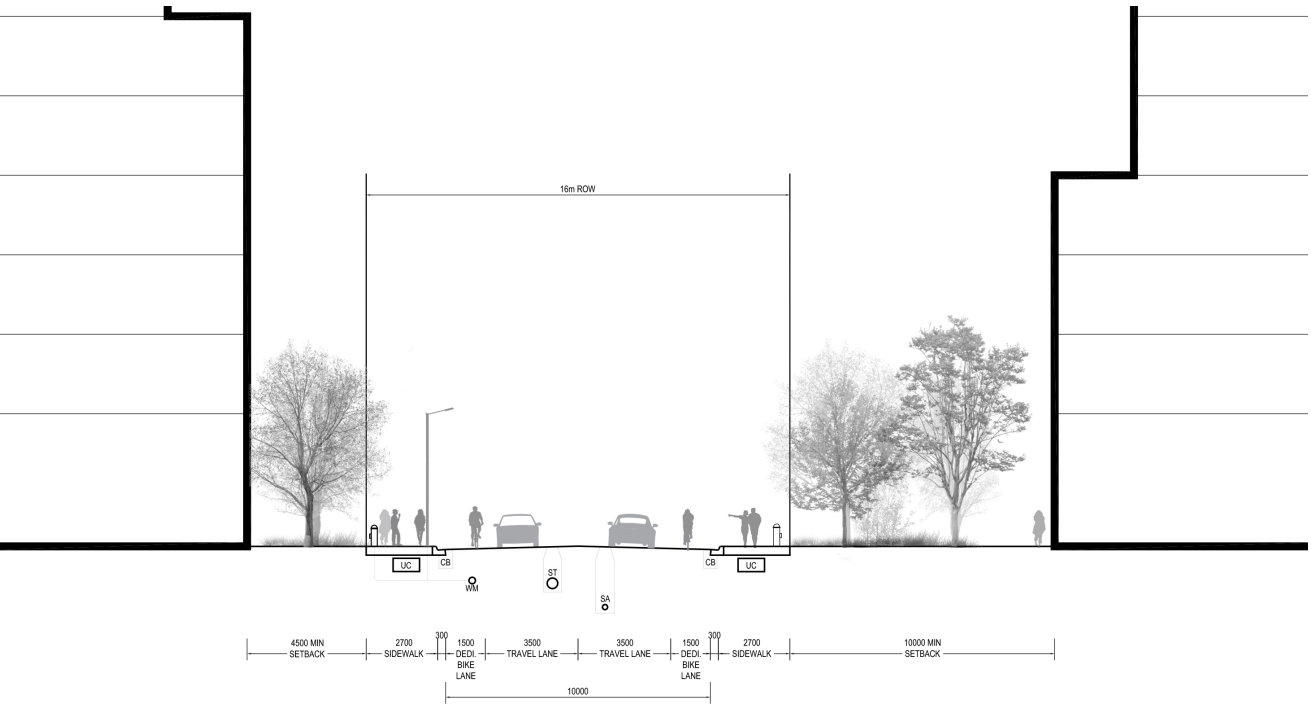
Section E



Figures are conceptual only. Final design details to be confirmed through discussions with staff

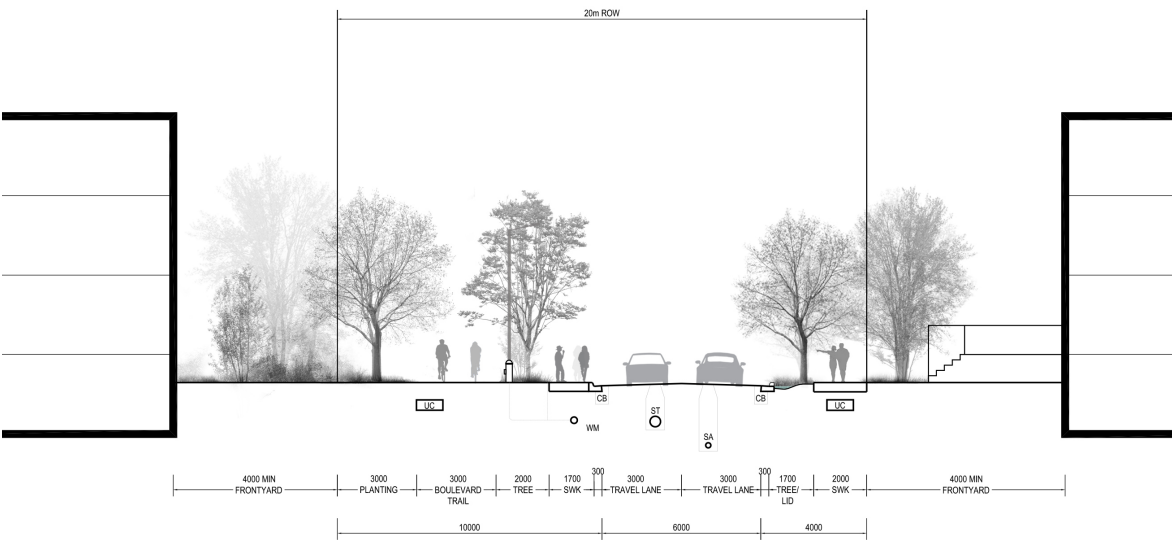
Minor Collector Street A: Lake Street Campus

Section C

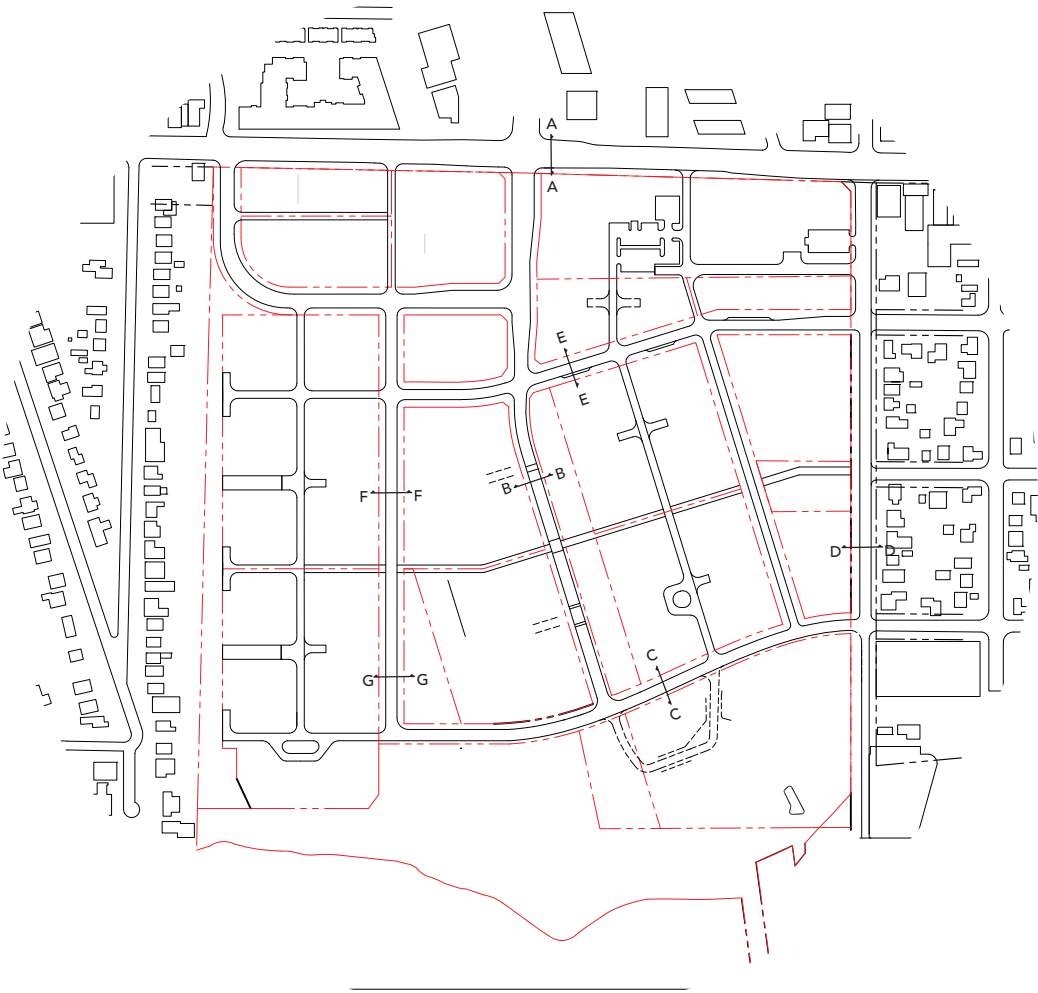


Local Street F: Lake Street

Section F



Figures are conceptual only. Final design details to be confirmed through discussions with staff



Local Street F: Lake Street (Park)

Section G

